

Plaque

Each donation includes a plaque, provided by the DeKalb Park District. The plaque is a permanent cast bronze plate with raised letters (various sizes available). The botanical and common name of the tree is included on all tree plaques. The DeKalb Park District reserves the right to determine final plaque wording. Sample wording is as follows:

Botanical Tree Name
Common Tree Name
In Memory
of
(YEAR) ____ *Name* ____ (YEAR)

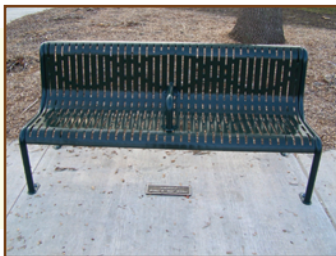
Tree Plaques

The plaque will be mounted on a concrete pedestal that has a sealer applied to reduce weathering. The face of the base is slanted to present the plaque attractively. The base and plaque are installed within the mulched area after the tree has been planted.

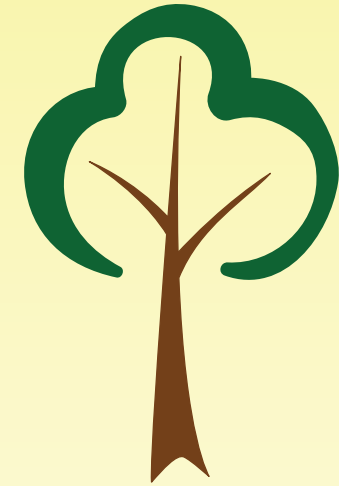


Bench Plaques

The plaque will be installed in the concrete (provided by the Park District) just under the center portion of the bench.



DeKalb Park District Tree & Bench Commemorative Program



A tree or bench is a lasting recognition or remembrance that contributes to the beauty and variety of the park landscape.



1403 Sycamore Road
DeKalb, IL 60115
815.758.6663
www.dekalbparkdistrict.com

Bench Donations

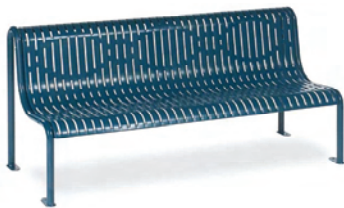
All bench donations include the bench, plaque, concrete slab and installation.

Bench Types

Two bench styles are available. Certain bench styles are more appropriate for specific parks based on amenities at the site.



(8' recycled plastic bench)



6' metal bench

Location

Staff will assist you in selecting a bench style, park and location. The final bench location will be at the discretion of the Park District. The Park District reserves the right to move or replace any donated items should the need arise.

The Park District guarantees to maintain and/or replace damaged benches within the first 10 years of the initial installation date. Benches will be maintained in accordance to Park District standards.

Price

A bench donation is \$1,200 and includes installation and memorial plaque.
(The price of bench donations is subject to change.)

Tree Donations

A donated tree may be selected from a variety of species chosen for the beauty of their growth and fall color. The Park District plants trees in spring (March 1 deadline) and fall (September 1 deadline) depending upon the appropriate planting season for the species selected.

Tree Types

The selection of trees listed below have 2 1/2 - 3 inch diameters when planted, and usually grow to more than 50 feet. They provide large canopies and lose their leaves in fall.

(color) in parenthesis indicates fall color
* indicates spring planting only

- Ohio Buckeye – (yellow/orange)
- Accolade Elm – (yellow)
- Honey Locust - (yellow)
- Kentucky Coffee Tree – (yellow)
- River Birch - (golden yellow)
- Autumn Blaze Maple – (orange/red)
- Sugar Maple – (yellow/orange)
- Bur Oak – (yellow/purple) *
- Chinkapin Oak – (russet) *
- Northern Red Oak – (russet) *
- Swamp White Oak – (yellow) *



Location

Staff will assist you in selecting a tree, park and planting location. The final location of a tree will be at the discretion of the Park District. The Park District reserves the right to move or replace any donated items should the need arise.

The Park District guarantees to replace any donated tree if it fails within the first 10 years of the initial planting date. Each tree will be maintained in accordance to Park District standards.

Price

A tree donation is \$600 and includes planting and memorial plaque installation. An existing/established tree can also be chosen for the same price of \$600. This donation will be used to offset the cost of planting trees in other parks.
(The price of tree donations is subject to change.)

Tree/Bench Donation Form

To order a tree or bench, please send in the form below or call the DeKalb Park District at 815.758.6663 ext 123. We will assist you with the process of selecting a tree or bench, deciding on the wording for the plaque, and choosing a fitting location for your donation.

Dedicated to...

Donor...

Name

Address

City, State, Zip

Phone

E-mail

Bench (\$1,200)

Tree (\$600)

(checks should be made payable to DeKalb Park District)

The price of tree and bench donations is subject to change.

Preferred Park Location

Preferred Tree Species (see list)

Please return this form to:

DeKalb Park District

Attn: Assistant Director
1403 Sycamore Road
DeKalb, IL 60115

Phone: 815-758-6663 ext 123

Fax: 815-758-4081

www.dekalbparkdistrict.com