

Hopkins Park Outdoor Pool

DeKalb Park District - Board Meeting - 03.28.2024



Progress Update:

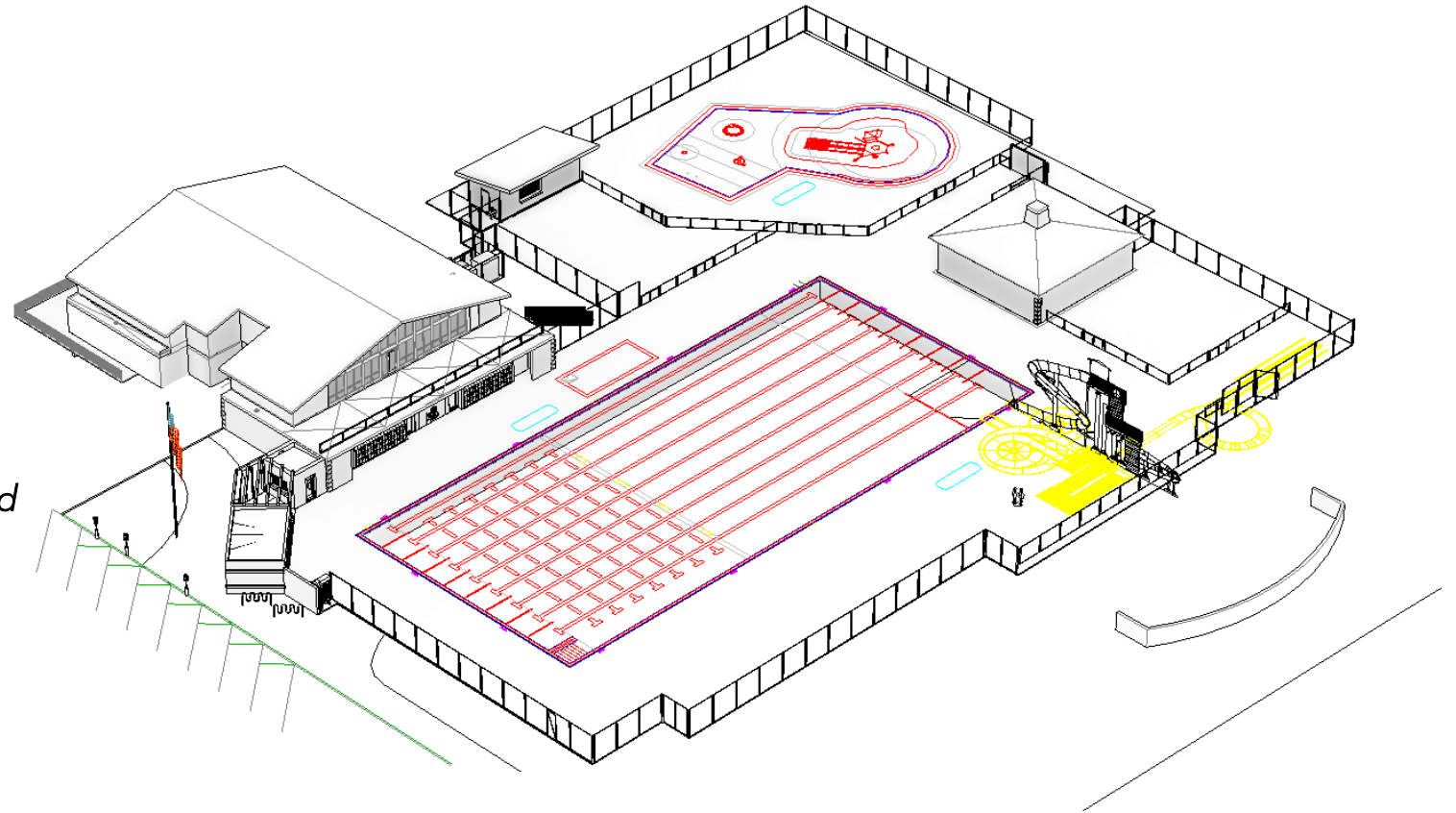
Budget Review in early-March

Estimate showed a budget overage

- ✓ *Progress continues forward*

Same Services with Lower Construction Costs

- ✓ *Efficiencies identified with no services removed*
 - ✓ *Reduced amount of new construction*
 - ✓ *Relocated functions onsite*
- ✓ *Updated Site Plan reduces concrete deck & site changes, prioritizing affordable landscaping*



Same Services, New Plan:

- ✓ Entry Admissions Building (South Parking Lot)
- ✓ Entry Lifeguard Building with Fastpass Window
- ✓ Pool Equipment Storage

- ✓ Fastpass Window (North Parking Lot)
- ✓ Pool Mechanical infrastructure update

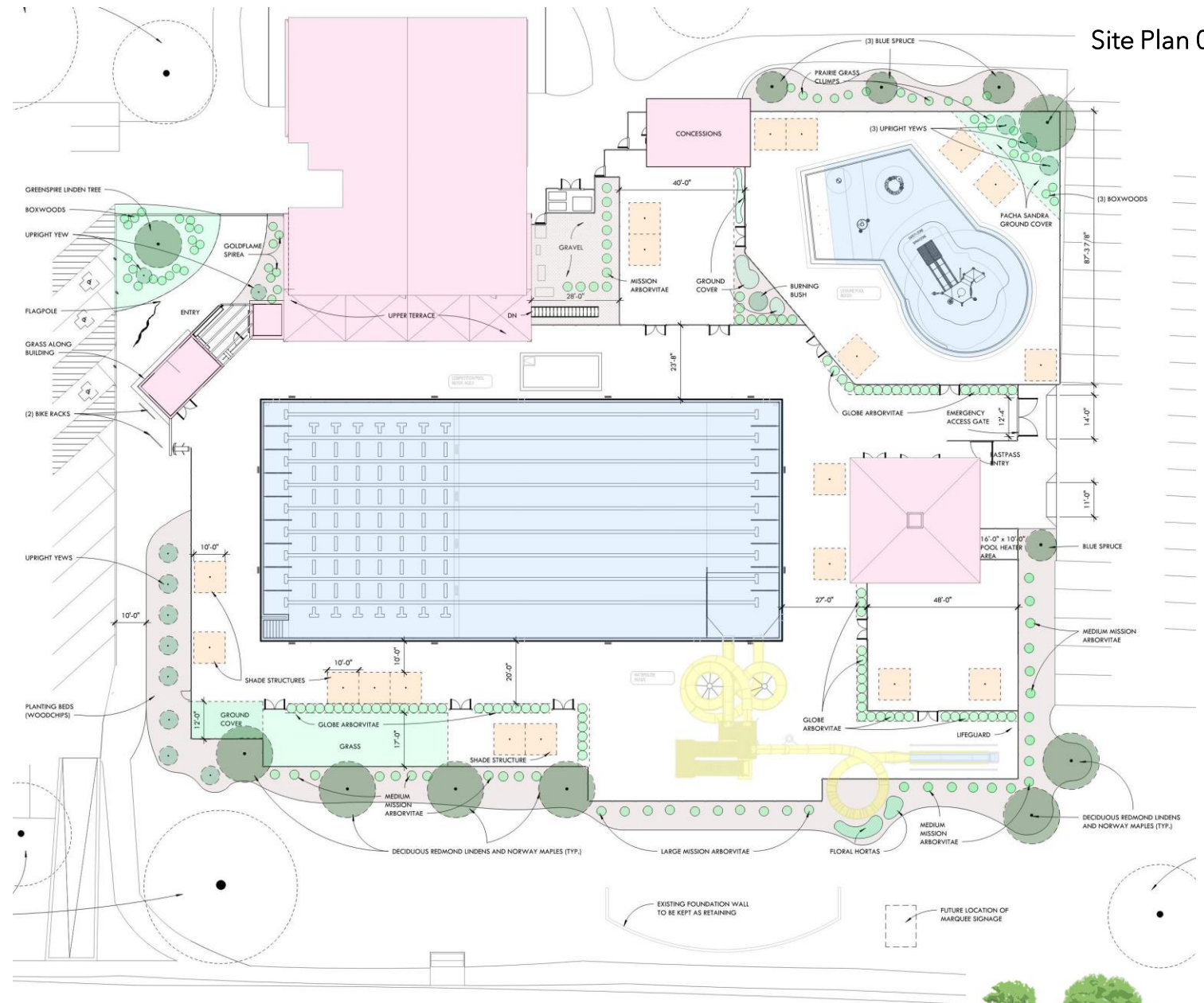
- ✓ Pool Administrator Office
(2nd Floor of Park District building)

- ✓ Concessions

- ✓ Shade Structures around site
- ✓ Landscaping & Greenery around site

- ✓ 50m Main Pool with Slides
- ✓ Leisure Pool with Playset and Kids Equipment

Site Plan 03.2024



Pools:

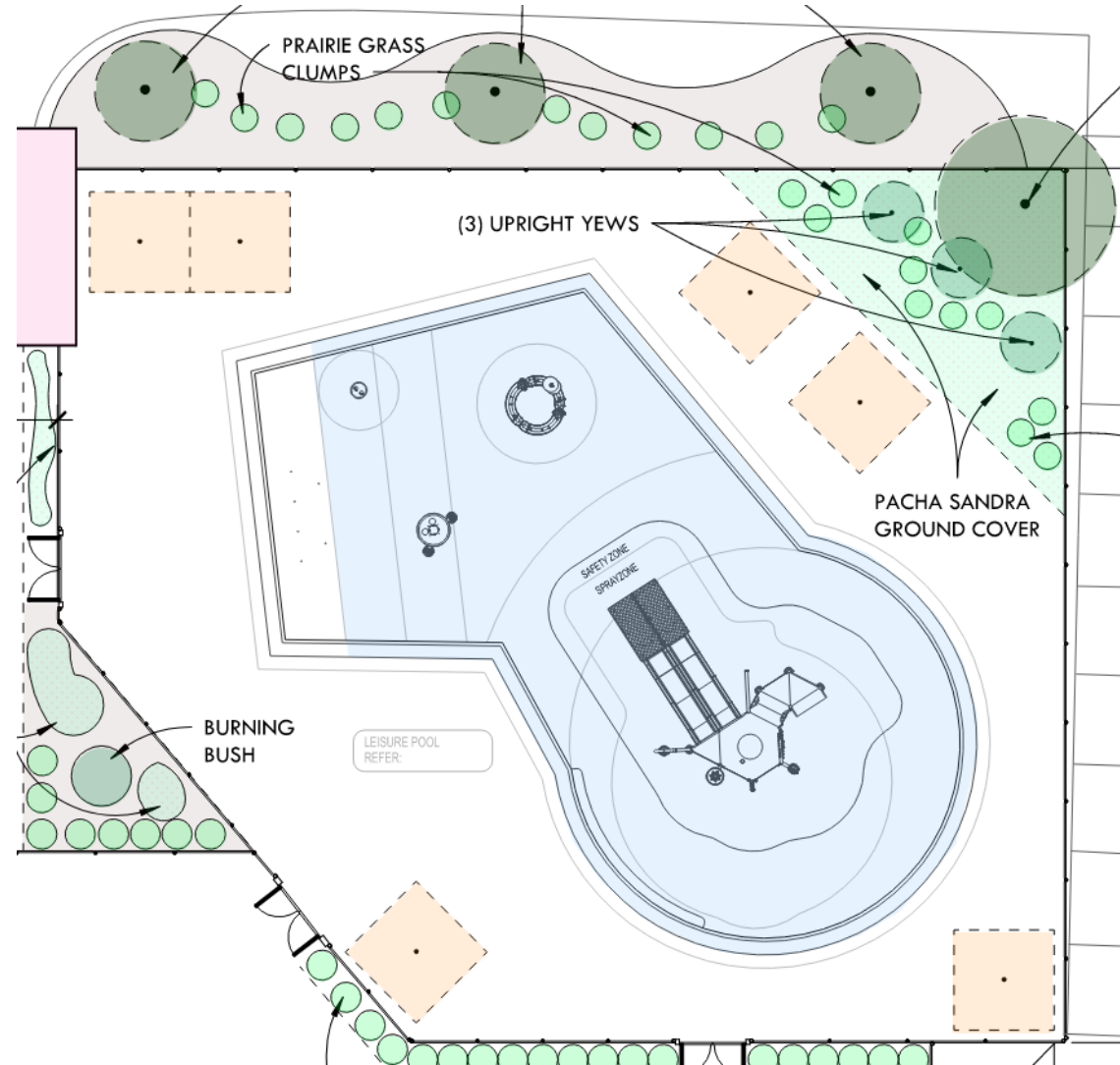
Leisure Pool Plan

Main Pool

- ✓ *Evaluating Myrtha liner versus a new concrete pool system for potential cost savings*
- ✓ *50m size and bather load to remain*

Leisure Pool

- ✓ *New shape optimizes bather load*
- ✓ *Reduces construction costs*
- ✓ *Maximizes deck size and green space*

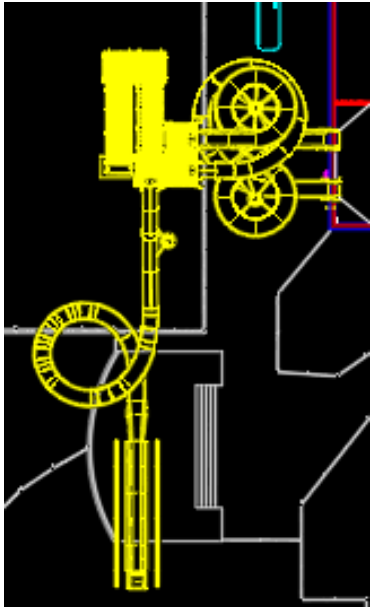


Pools:

Vortex Slide Rendering

Slides & Playset

- ✓ Vortex selected
- ✓ Co-op opportunity



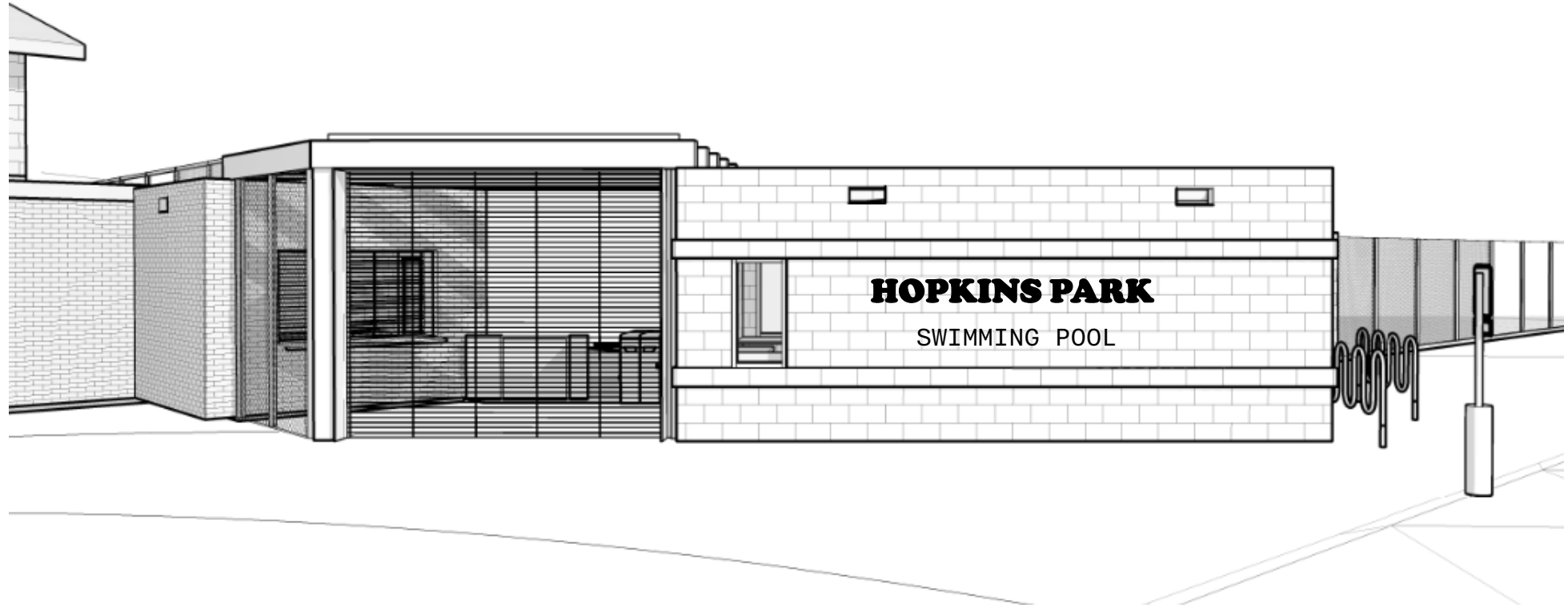
Vortex Slide Plan



All 3D renders shown are for illustration purposes only. Actual colors, textures and finishes may differ from renders.

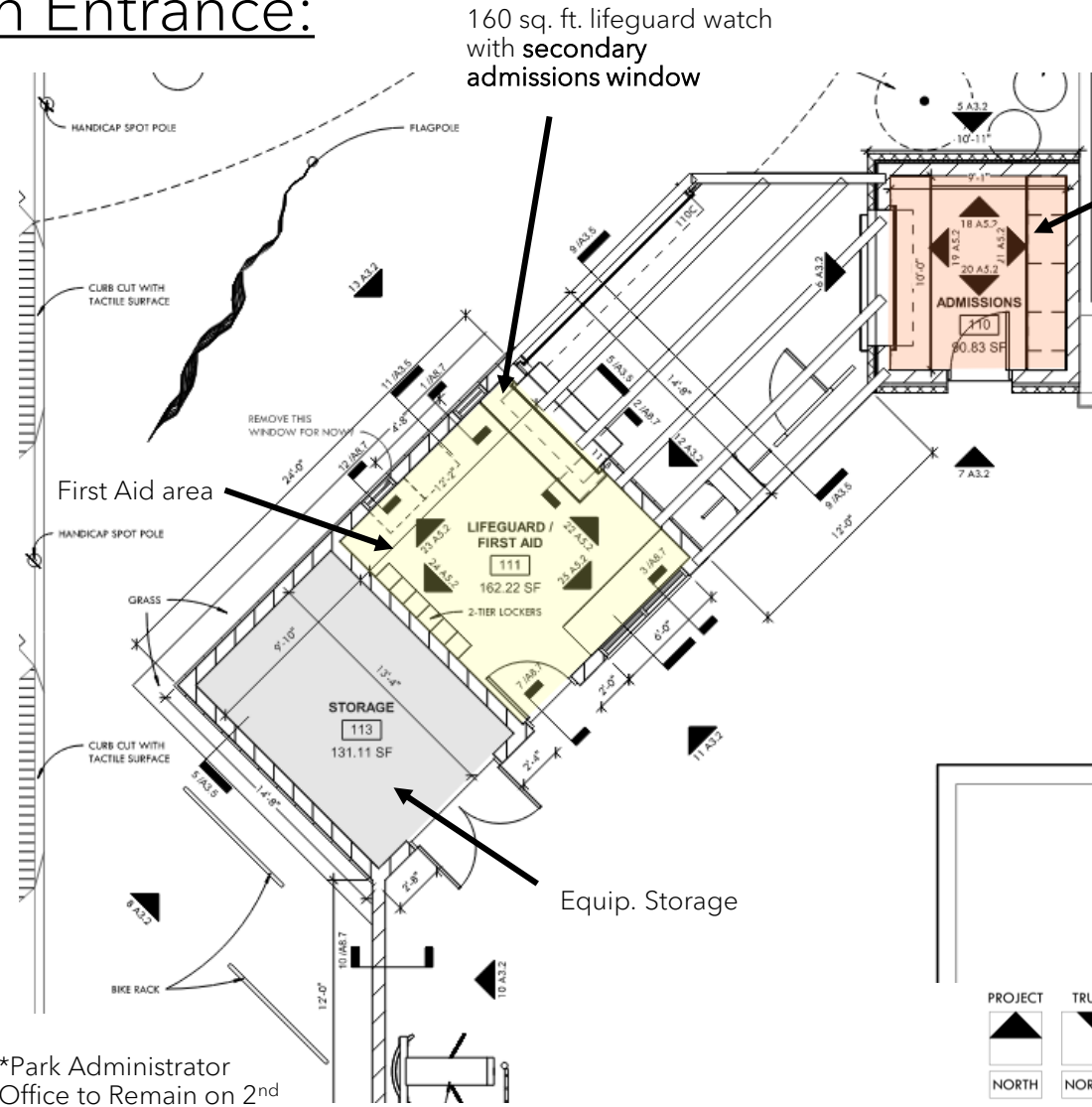
Main Entrance:

- ✓ *Reduce building size*
- ✓ *Reduce complexity*
- ✓ *Maintain (2) admissions windows*
- ✓ *Maintain clear wayfinding*



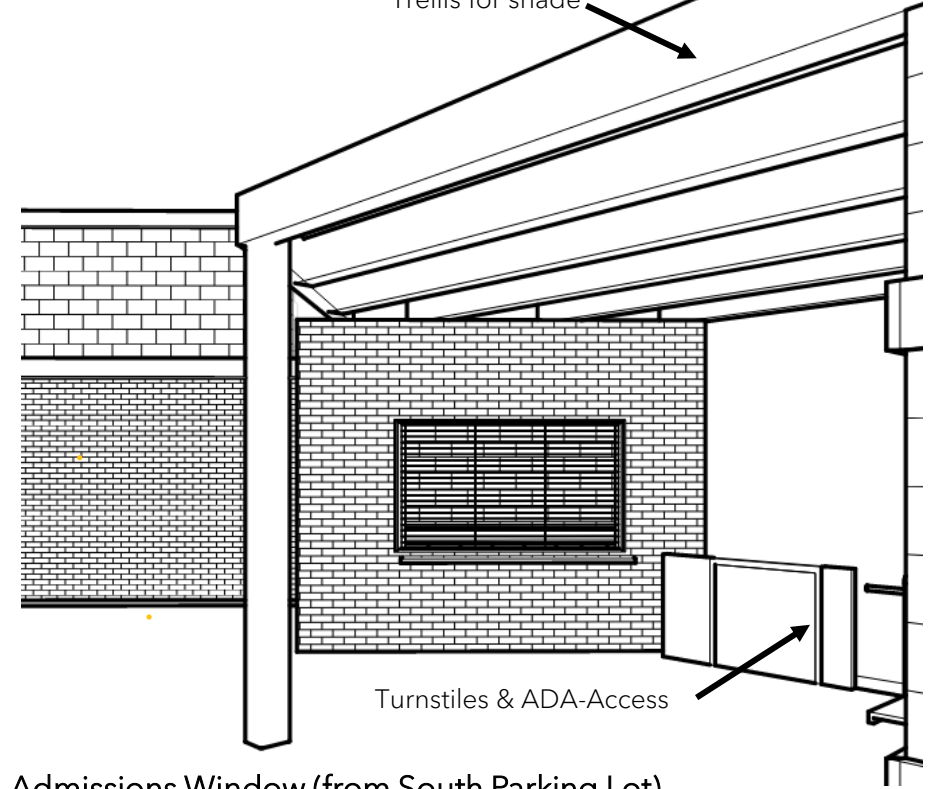
New Swimming Pool Entrance with 16'-0" wide passage.

Main Entrance:

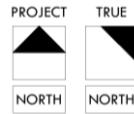


90 sq. ft. office with admissions window

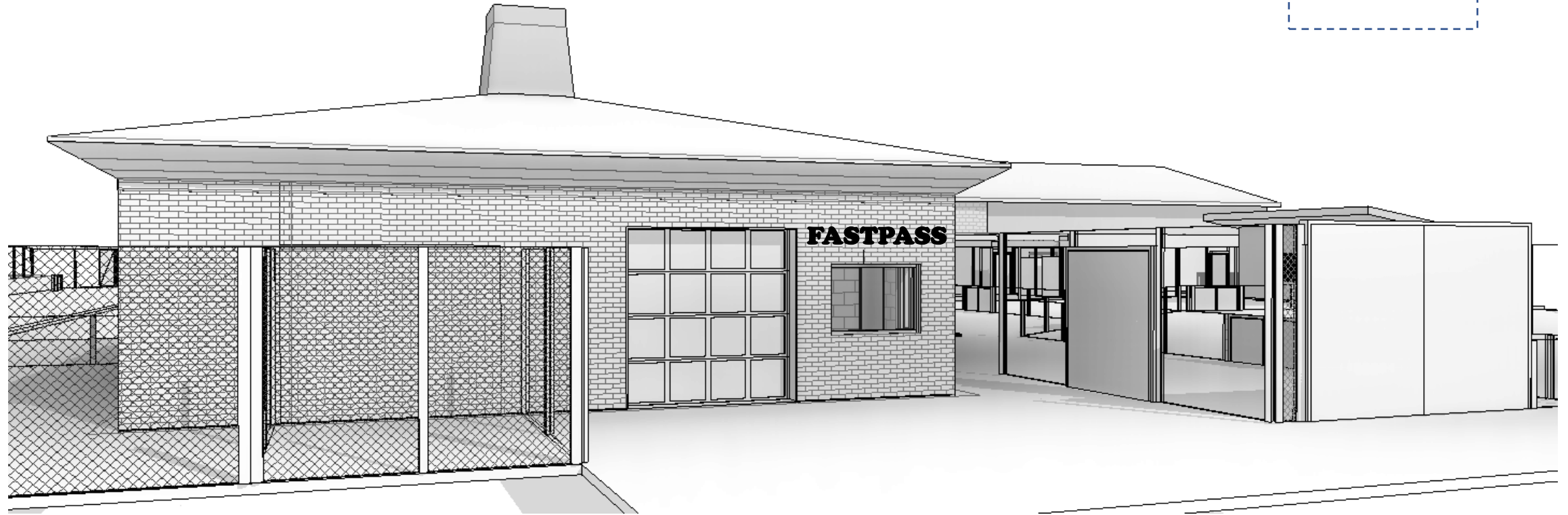
Trellis for shade



Admissions Window (from South Parking Lot)



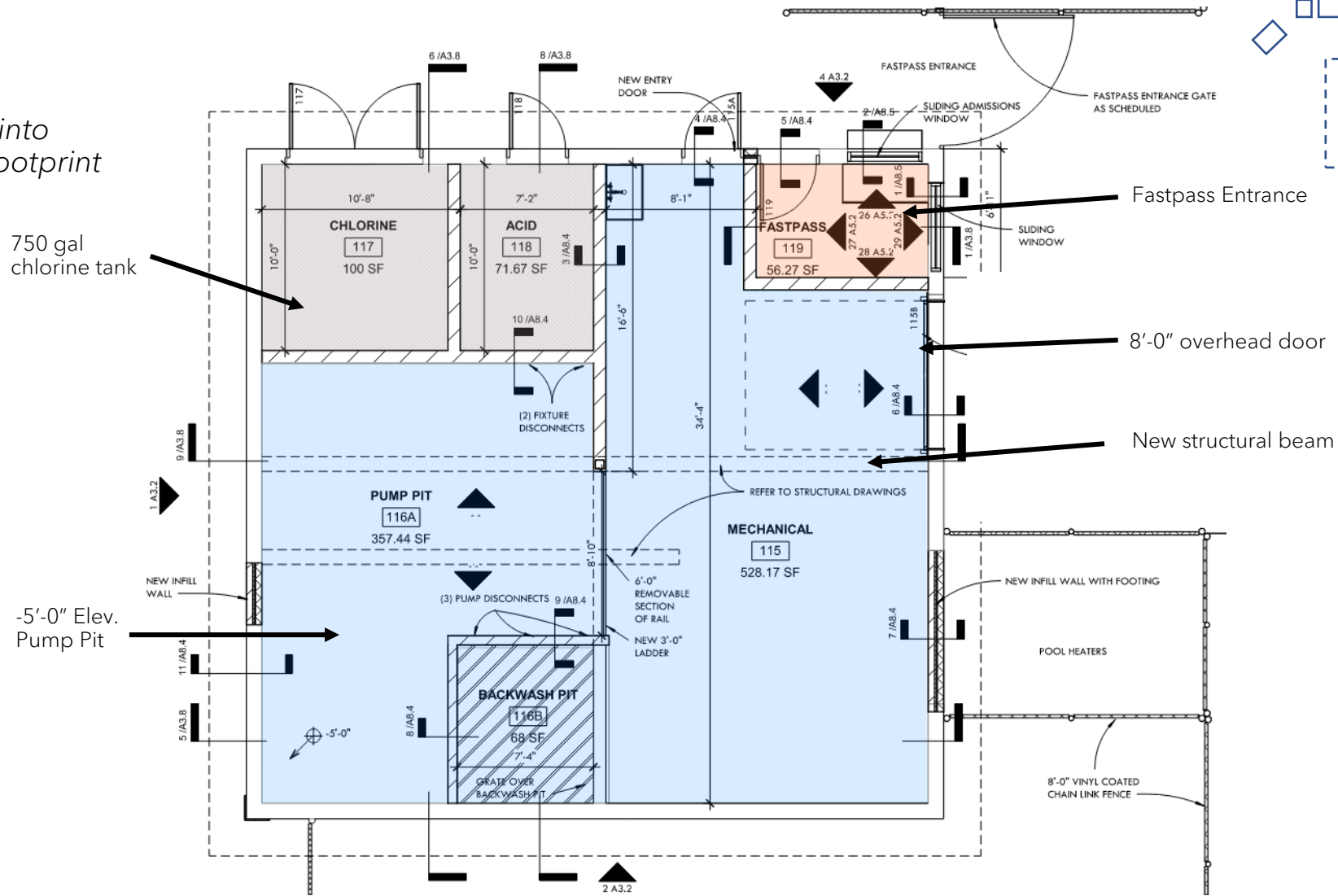
Pool Mechanical Building with Fastpass Entry:



New Fastpass Entrance (from North Parking Lot)

Pool Mechanical Building with Fastpass Entry:

✓ Relocate Fastpass into existing building footprint



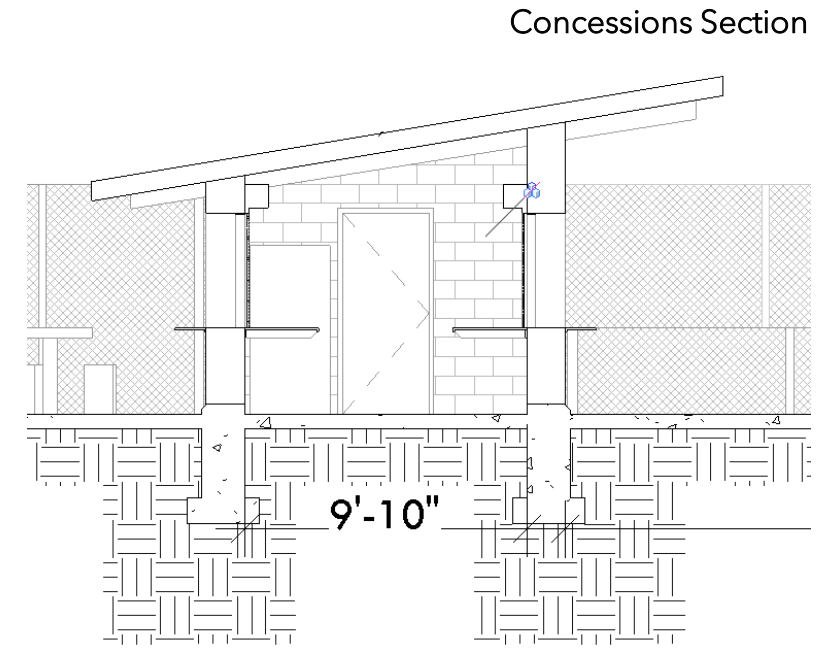
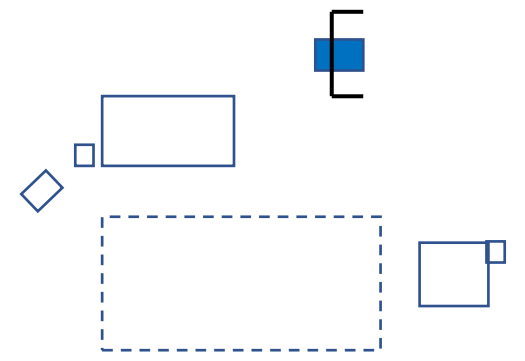
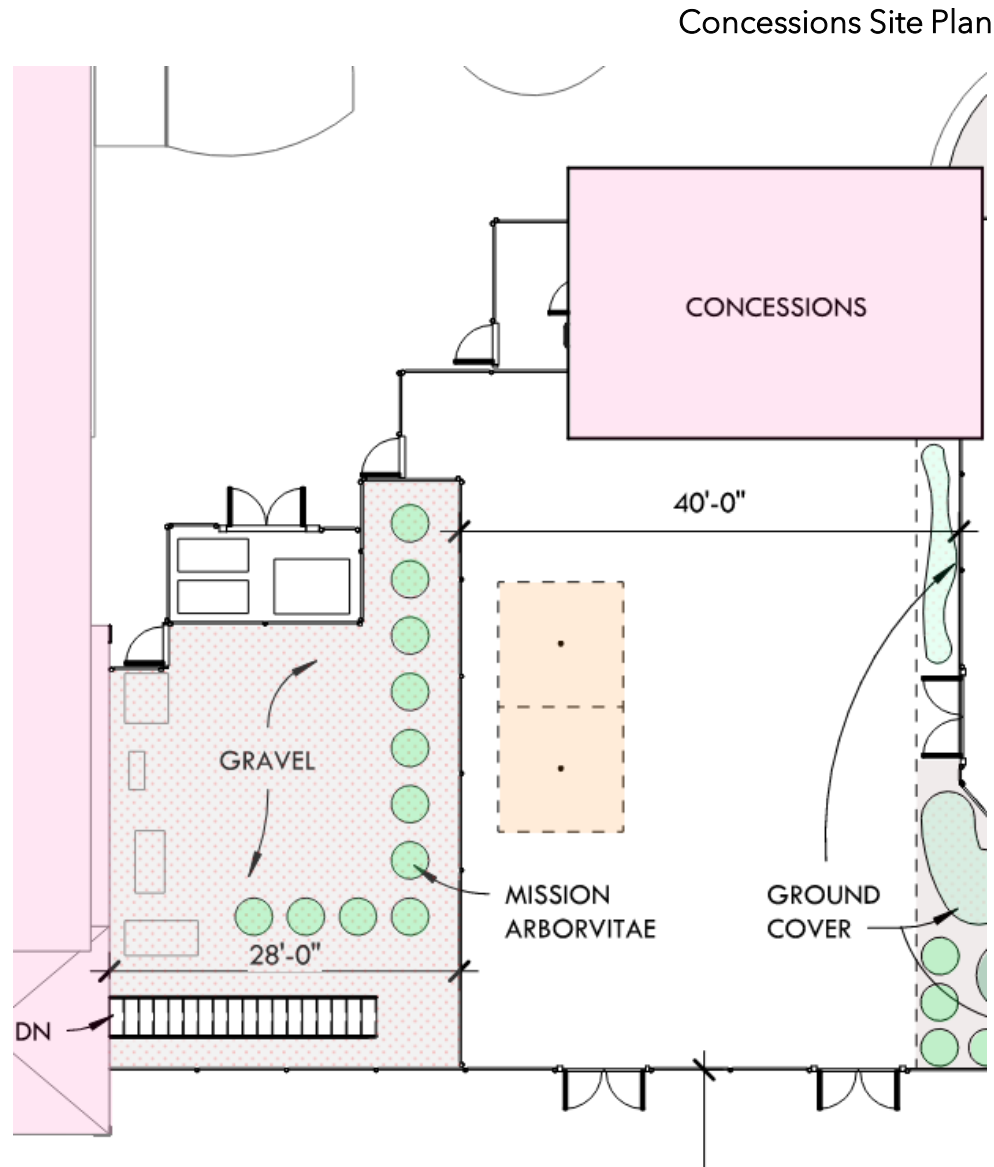
LEGEND:

CONCESSIONS	ADMISSIONS
STORAGE	LIFEGUARD
MECHANICAL	RESTROOMS / SHOWERS
POOL EQUIP.	BRIDAL SUITE
SHADE EQUIP.	

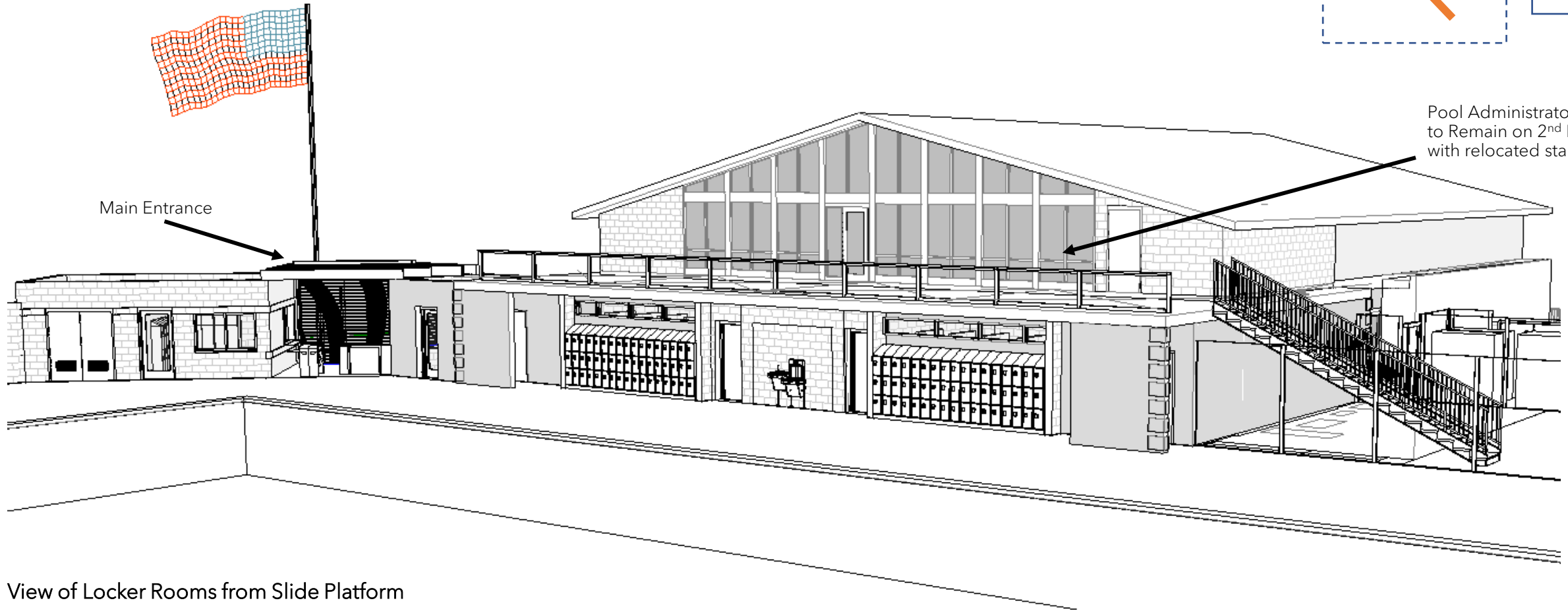
PROJECT	TRUE
NORTH	NORTH

Concessions:

- ✓ Reduce deck size
- ✓ Add landscaping & greenery
- ✓ Add Shade Structures
- ✓ Maintain Concessions access from pool side & park side



Locker Rooms & Park District Office:



View of Locker Rooms from Slide Platform

Locker Rooms & Bridal Suite:



Locker Room Toilets

Locker Room Showers

Locker Room Changing Cubicles

33-44 lockers per side

(2) Family Toilets / Showers

Next steps.

