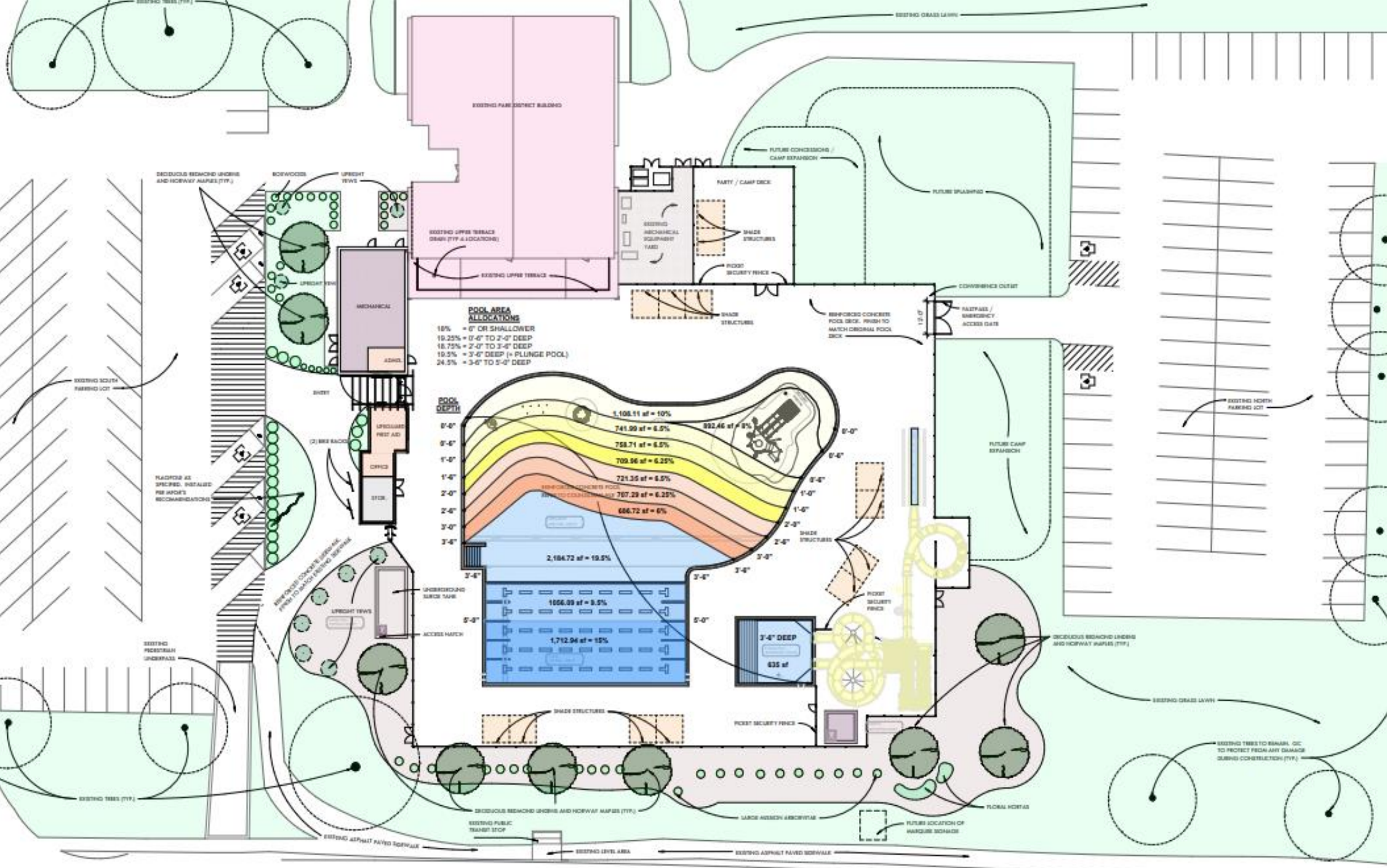




DeKalb Park District Board Meeting

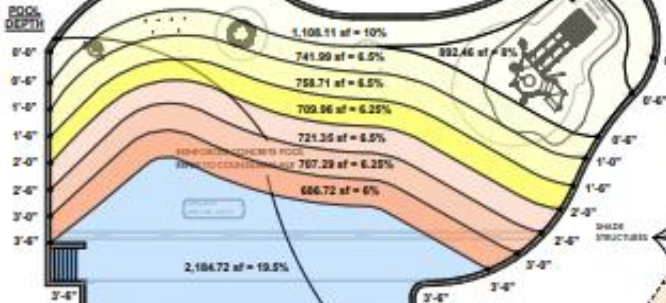
July 25, 2024

Updated July 24, 2024



POOL AREA ALLOCATIONS

18%	= 0" OR SHALLOWER
19.25%	= 0'-0" TO 2'-0" DEEP
18.75%	= 2'-0" TO 3'-0" DEEP
19.5%	= 3'-0" DEEP (+ PLUNGE POOL)
24.5%	= 3'-0" TO 5'-0" DEEP



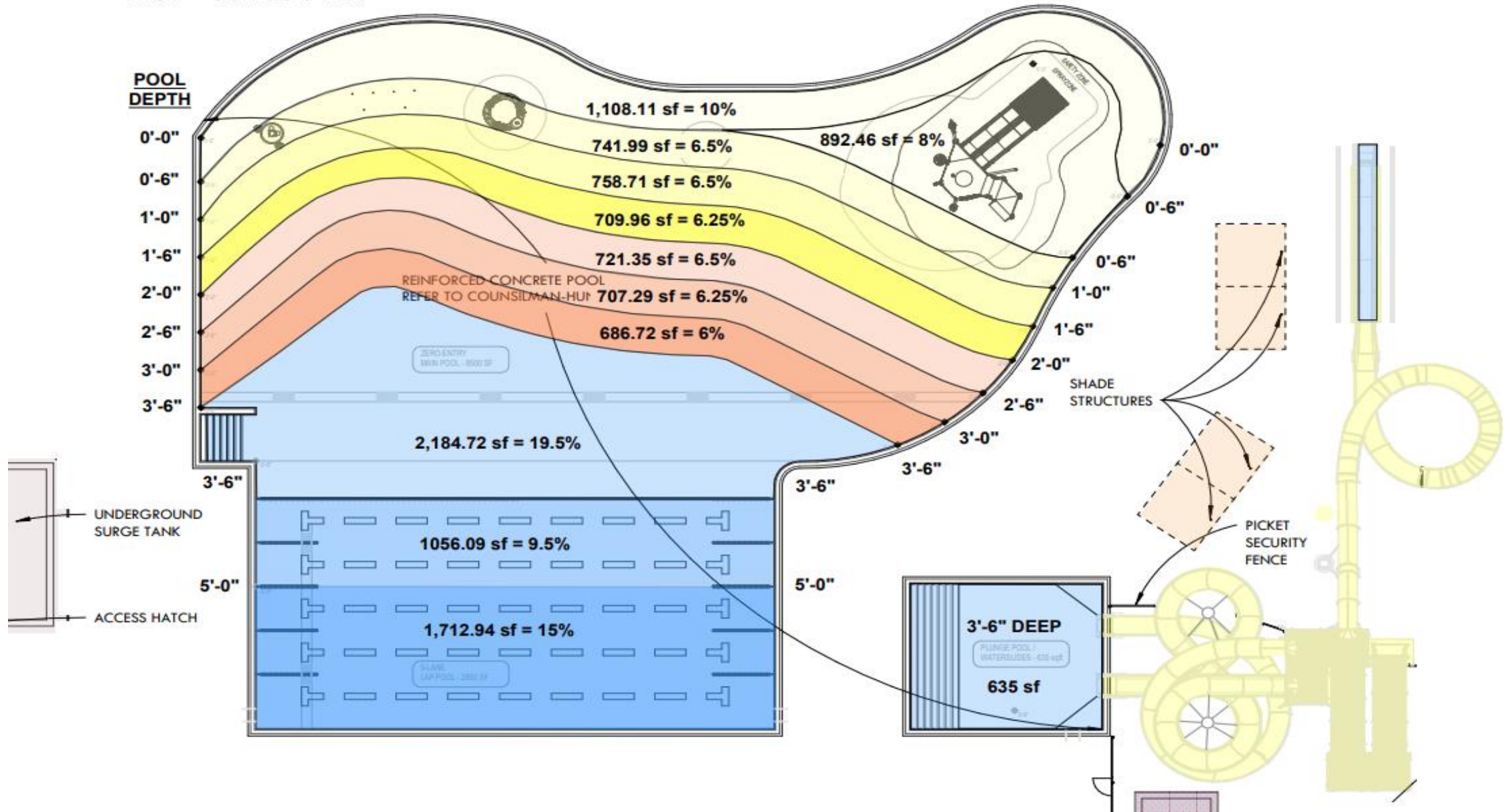
0'-4"	1,056.89 sf = 9.5%
0'-4"	1,712.96 sf = 15%

3'-4" DEEP
635 sf

EXISTING TREES TO REMAIN, GC TO PROTECT FROM ANY DAMAGE DURING CONSTRUCTION (TYP.)

**POOL AREA
ALLOCATIONS**

- 18% = 6" OR SHALLOWER
- 19.25% = 0'-6" TO 2'-0" DEEP
- 18.75% = 2'-0" TO 3'-6" DEEP
- 19.5% = 3'-6" DEEP (+ PLUNGE POOL)
- 24.5% = 3'-6" TO 5'-0" DEEP



PlayNuk

BY/  VORTEX





**The product shown in the image may differ from the actual product sold.*

Ideal age group: 2 to 5 years

VOR 7250
CASCADE LOOP



Ideal age group: 6 years and up

VOR 7658
FROG N°5

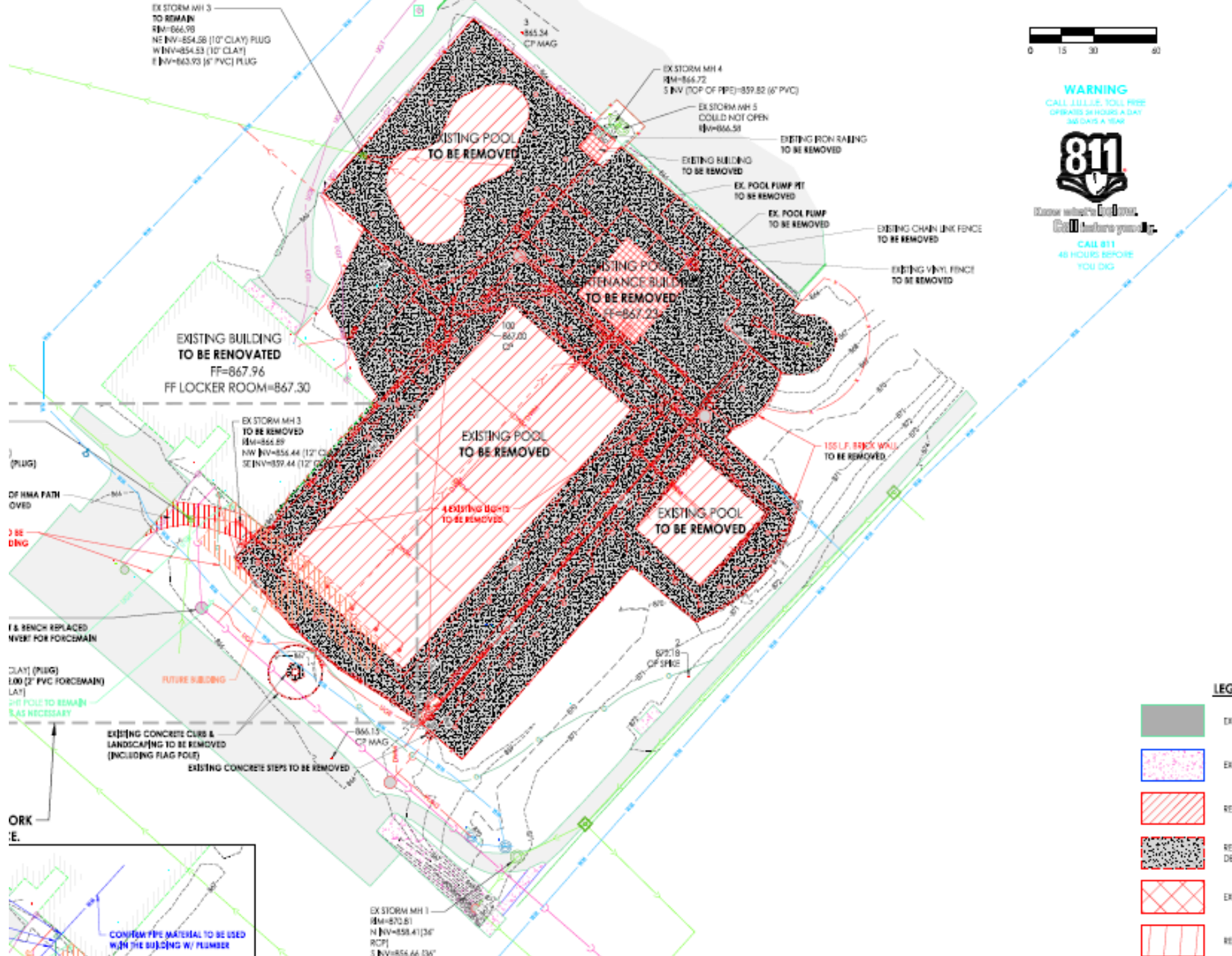


Ideal age group: 0 - 6 years

VOR 7201
FROG N°2



All 3D renders shown are for illustrative purposes only. Actual colors, textures and finishes may differ from renders.



EX STORM MH 3
TO REMAIN
RM=866.98
NE INV=854.08 (10" CLAY) PLUG
W INV=854.83 (10" CLAY)
E INV=863.93 (6" PVC) PLUG

3
855.34
CP MAG

EX STORM MH 4
RM=866.72
S INV (TOP OF PIPE)=859.82 (6" PVC)

EX STORM MH 5
COULD NOT OPEN
RM=866.58

EXISTING IRON RAILING
TO BE REMOVED

EX. POOL PUMP PIT
TO BE REMOVED

EX. POOL PUMP
TO BE REMOVED

EXISTING CHAIN LINK FENCE
TO BE REMOVED

EXISTING VINYL FENCE
TO BE REMOVED

EXISTING POOL
TO BE REMOVED

EXISTING POOL
MAINTENANCE BUILDING
TO BE REMOVED
FF=867.23

EXISTING POOL
TO BE REMOVED

EXISTING BRICK WALL
TO BE REMOVED

EXISTING POOL
TO BE REMOVED

EXISTING BUILDING
TO BE RENOVATED
FF=867.96
FF LOCKER ROOM=867.30

EX STORM MH 3
TO BE REMOVED
RM=855.89
NW INV=856.44 (12" CLAY)
SE INV=859.44 (12" CLAY)

(PLUG)

DP HMA PATH
COVERED

3 BE
DING

F & BENCH REPLACED
INVERT FOR FORCEMAIN

CLAY (PIEG)
100 (2" PVC FORCEMAIN)
LAY

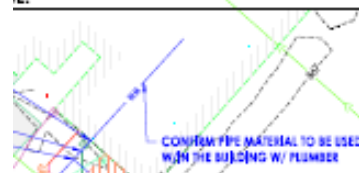
SHI POLE TO REMAIN
IF AS NECESSARY

EXISTING CONCRETE CURB &
LANDSCAPING TO BE REMOVED
(INCLUDING FLAG POLE)

FUTURE BUILDING

EXISTING CONCRETE STEPS TO BE REMOVED

ORK
E.



CONFIRM PIPE MATERIAL TO BE USED
WITH THE BUILDING W/ PLUMBER

EX STORM MH 1
RM=870.81
N INV=858.41(36"
RCP)
S INV=856.66 (36"
RCP)



WARNING
CALL 811.U.S. TOLL FREE
OPERATES 24 HOURS A DAY
365 DAYS A YEAR



Know what's UNDER
Call before you dig.

CALL 811
48 HOURS BEFORE
YOU DIG

- Gas Main
- Overhead Electric Line
- Underground Electric Line
- Electric Pedestal
- Electric Transformer
- Overhead Telephone Line
- Underground Telephone
- Underground Fiber Optic
- Telephone Pedestal
- Valve Box & Valve
- Valve Vault & Valve
- Fire Hydrant w/ Valve Box
- Fire Hydrant
- Waterman
- Water Service w/ Curb SI
- Storm Manhole
- Storm Catch Basin
- Flared End Section
- Curb Inlet Type 700
- Inlet Special
- Storm Sewer
- Sump Pump
- Sanitary Manhole
- Sanitary Drop Manhole
- Sanitary Cleanout
- Sanitary Sewer
- Sanitary Service @ 15' MA
Sign

LEGEND

- EXISTING HMA PAVEMENT
- EXISTING CONCRETE SURFACE
- REMOVE HMA PAVEMENT
- REMOVE CONCRETE POOL DECK
- EX. BUILDING TO BE REMOVED
- REMOVE POOL